

### “VENERE NASCOSTO” HIDDEN SYSTEM

**SYSTEM TYPE:**  
HIDDEN HOOKS

**CLADDING TILES TYPOLOGY:**

- Terracotta panels;
- Stone slabs, simple or multi-layer, in small sizes;
- Ceramic tiles or Laminate boards, if it is possible to make kerfs on the edges;
- Other materials in small sizes on which is possible to make kerfs on the edges;

**WORKINGS ON TILE:**  
KERFS ON TILE EDGES

**SYSTEM COMPONENTS:**

The “Venere Nascosto” hidden system is made of these components:

- extruded profile type “CV1” in aluminium alloy EN 6060 T5 (or similar, when needed);
- hooks type “V3” and “V4” to support and retain panels, in stainless steel EN 1.4310 (AISI 301);
- springs type “V2” to fix hooks on “CV1” profile, in stainless steel EN 1.4310 (AISI 301);
- standard supporting stirrups type “A12” e “B12”, from extruded profile in aluminium alloy EN 6060;
- nuts and bolts to fix “CV1” profile on the stirrups, in stainless steel class A2;
- anchors to fix the stirrups on the wall, mechanical or epoxy-resin based, as needed;
- neoprene gasket strips, to gauge the panels, the hooks and the aluminium profile, in different thickness as needed;
- springs type “Iana” in tempered stainless steel, to support the insulating panels and press them on the wall surface, when thermal insulation is needed.

**SYSTEM DESCRIPTION:**

The vertical mullion “CV1” is put in place on the wall with a pace depending on the panels width and the design vertical joint between the panels.

The “CV1” profile is designed and shaped in order to fit without drillings the following components:

- the stirrups supporting the mullions on the wall, put in place with their design pace;
- the hooks “V3” and “V4” to support the panels, and their fixing springs “V2”, to be inserted using a small hammer in the proper groove of the vertical profile, put in place with a pace depending on the tiles high and the design horizontal joint;
- the insulation springs, if needed.

This arrangement of the components protects the coatings (oxidation or painting) from corrosion and assure the structure a longer lifetime.

The main characteristic of this “Venere Nascosto” hidden system is that each panel must have a continuous kerf in the superior and inferior edge, so that the hooks can insert into the kerfs and are not visible from outside the façade.

Each panel is solidarized with the hooks and the vertical profile using neoprene gasket strips of useful thickness and silicon drops, when needed.

When all the components are put in place, each panel can be set up or dismantled one at a time.

The supporting structure makes possible any type of regulation and it is able to protect from wind action and to allow the thermal expansion of all the components.

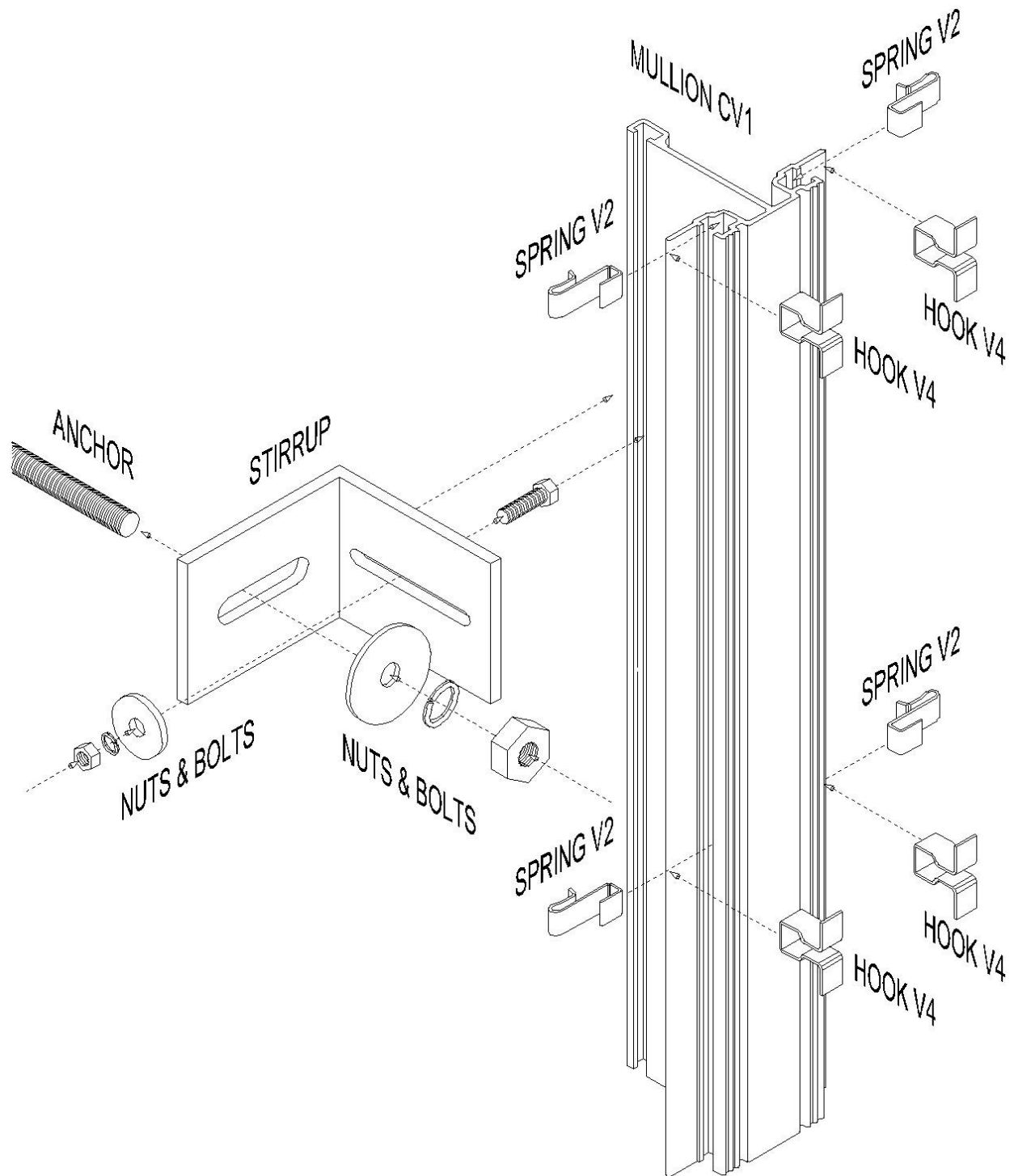
**SYSTEM SIZES:**

- The standard distance between the wall and the INTERNAL face of the panels is 110 mm, with a standard regulation of  $\pm 25$  mm.
- The standard width of the kerf is to be 2 mm at least, from 3 mm to 12 mm from the panel backside.

Standard details of the system in the next page.

### “VENERE NASCOSTO” HIDDEN SYSTEM

WARNING! THE ACTUAL COMPONENTS MAY CHANGE DEPENDING ON REAL SPECIFICS.



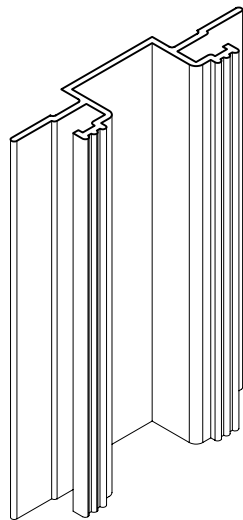
S. R. L.

via Saint Denis 35 - 20099 SESTO SAN GIOVANNI (MI)

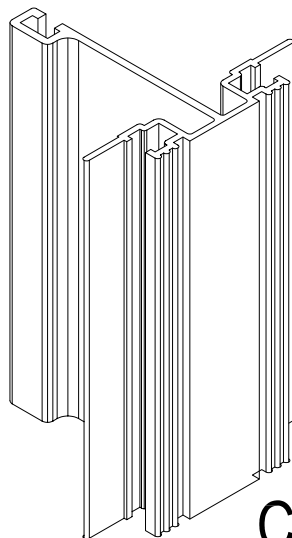
tel. 0226222446 tel. 0226222500 fax 0226222471

# "VENERE N" HIDDEN SYSTEM

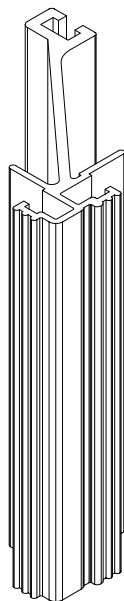
## STANDARD COMPONENTS



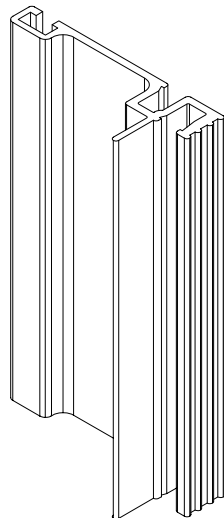
CV1r



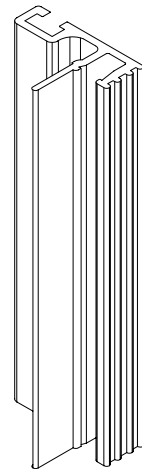
CV1



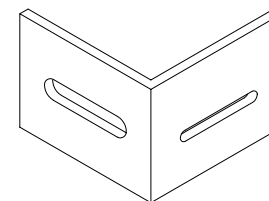
CV1a



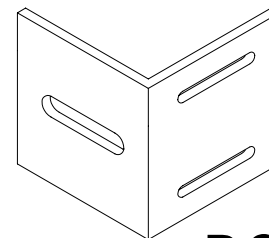
CV1m



CV1bm



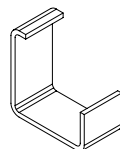
SINGLE STIRRUP



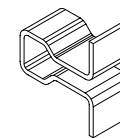
DOUBLE STIRRUP



V2 SPRING



V3 HOOK



V4 HOOK

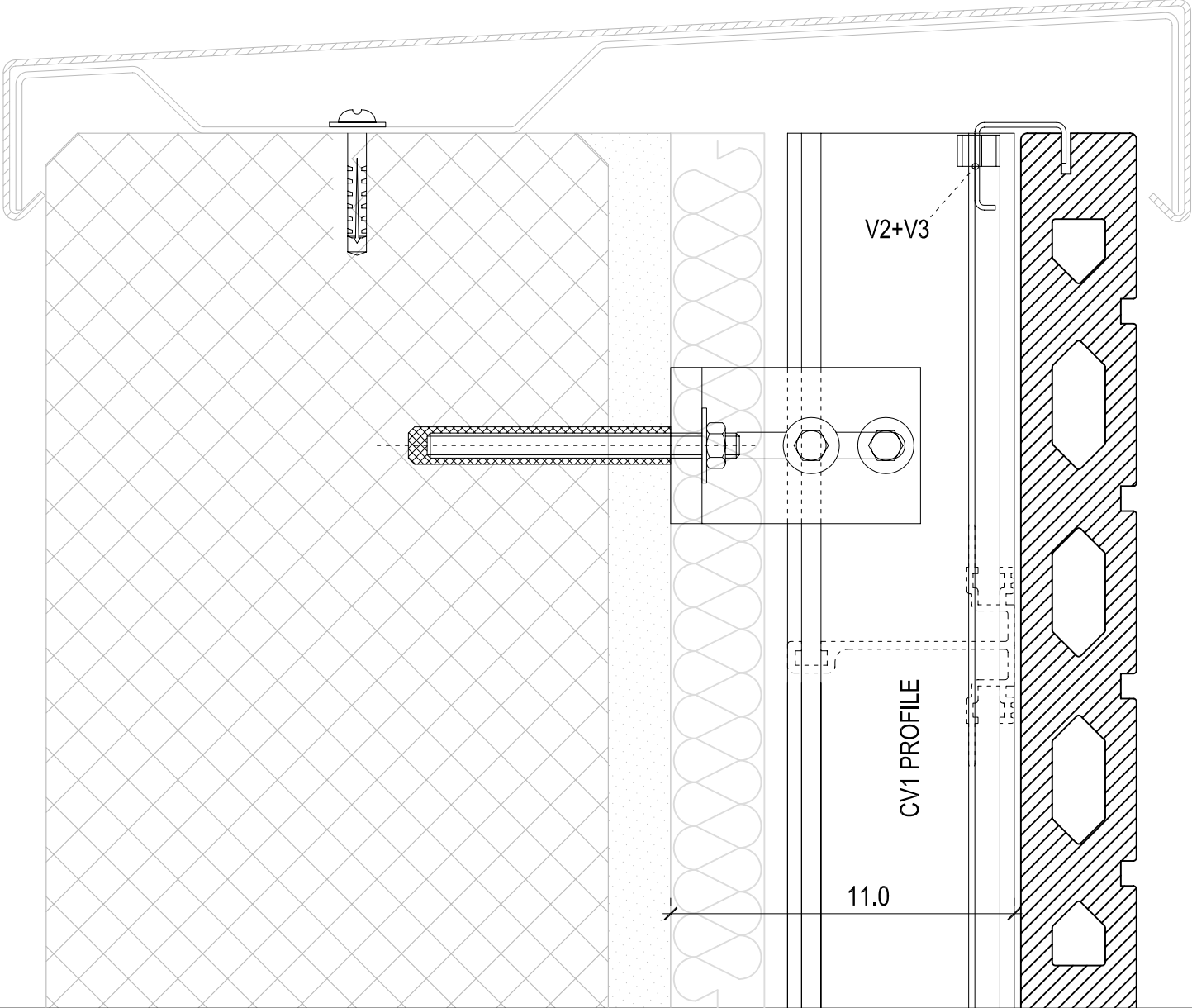
# "VENERE N" HIDDEN SYSTEM

STANDARD DETAIL FOR

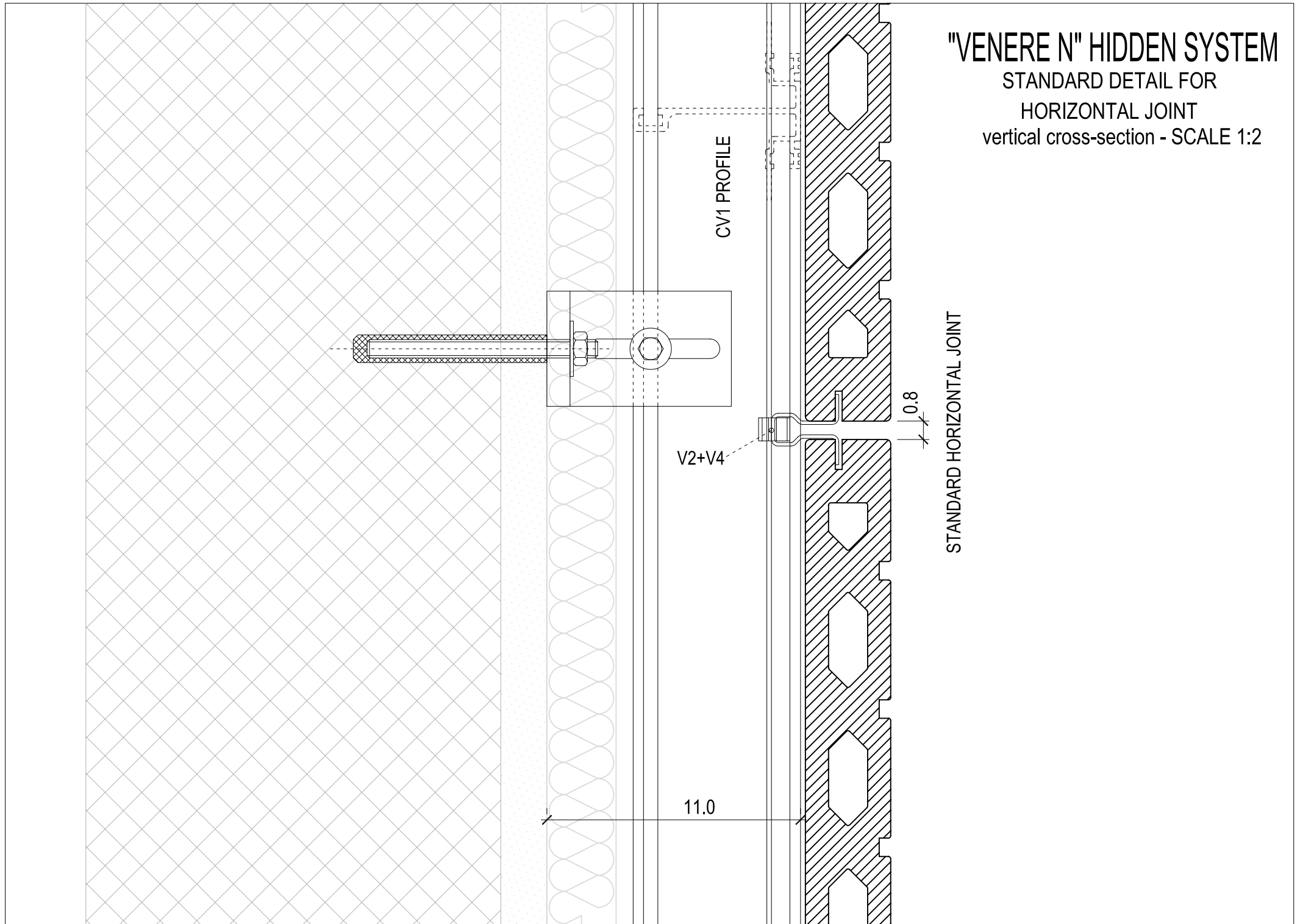
FACADE TOP

vertical cross-section - SCALE 1:2

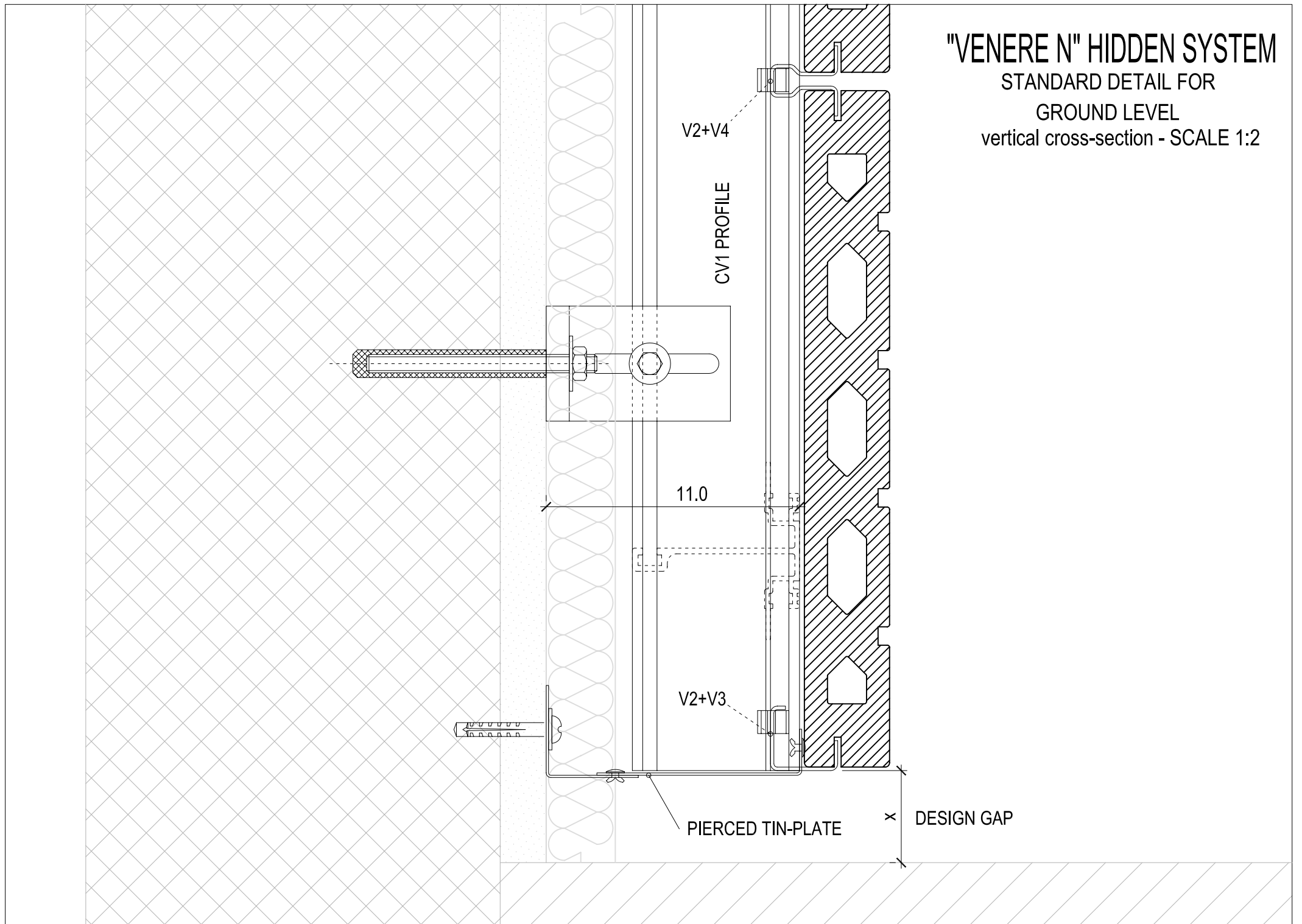
TOP TIN-PLATE



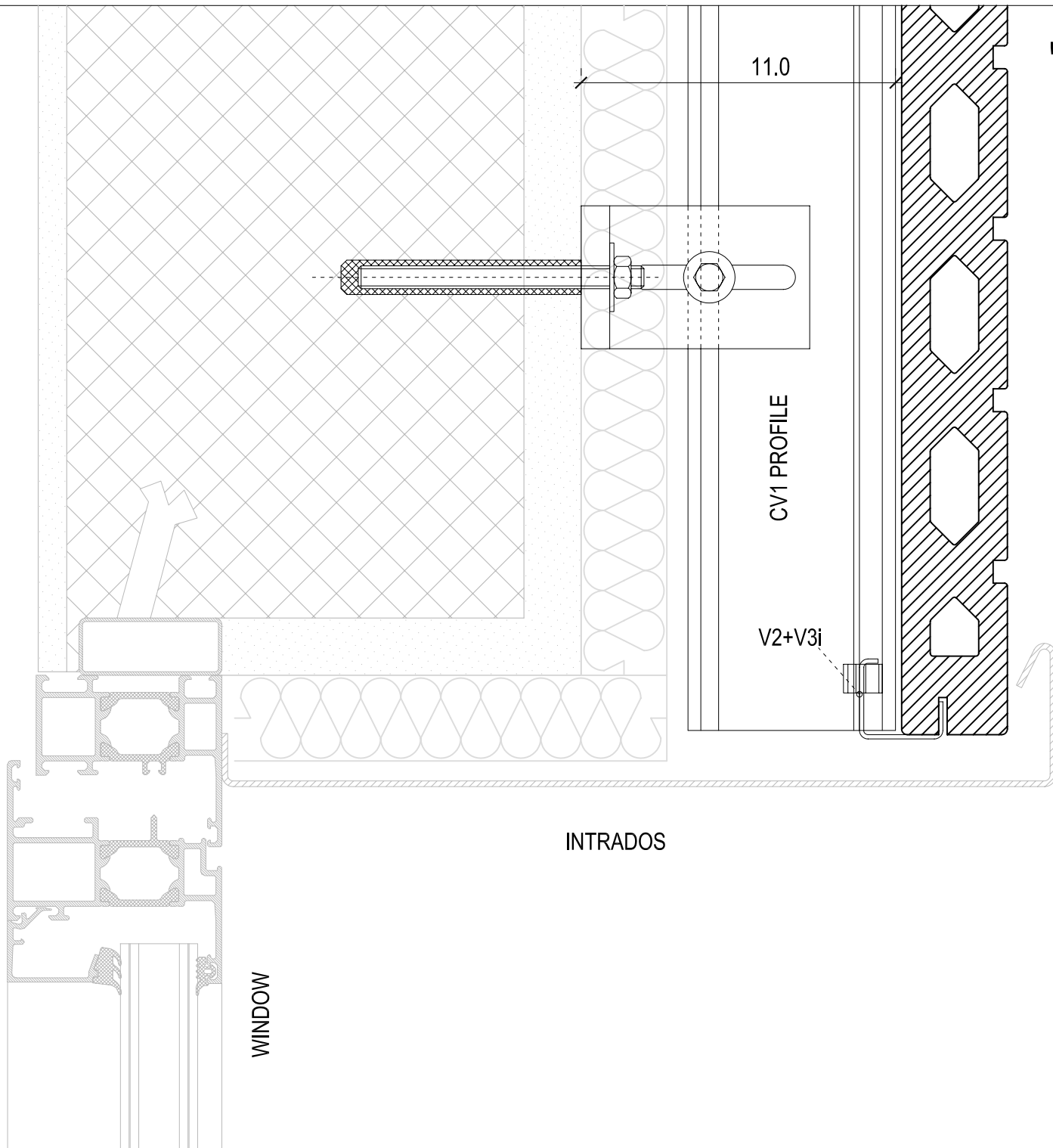
**"VENERE N" HIDDEN SYSTEM**  
STANDARD DETAIL FOR  
HORIZONTAL JOINT  
vertical cross-section - SCALE 1:2



**"VENERE N" HIDDEN SYSTEM**  
STANDARD DETAIL FOR  
GROUND LEVEL  
vertical cross-section - SCALE 1:2



**"VENERE N" HIDDEN SYSTEM**  
STANDARD DETAIL FOR  
WINDOW INTRADOS  
vertical cross-section - SCALE 1:2



"VENERE N" HIDDEN SYSTEM  
STANDARD DETAIL FOR  
WINDOWSILL  
vertical cross-section - SCALE 1:2

